

Wind limits must be agreed prior to tug rendezvous
 Tug positions to be briefed prior to tug rendezvous
 Thrusters/propulsion/anchors ready for manoeuvring prior to tug rendezvous
 Tugs make fast with speed < 5 knot, tugs line
 Tug work VHF Ch 08, 11
 Linesmen and lines boats work VHF Ch 08, 11

Normal tug rendezvous

4 - 7
kt

Swing bow to Port
 ROT 20 - 30 °/minute

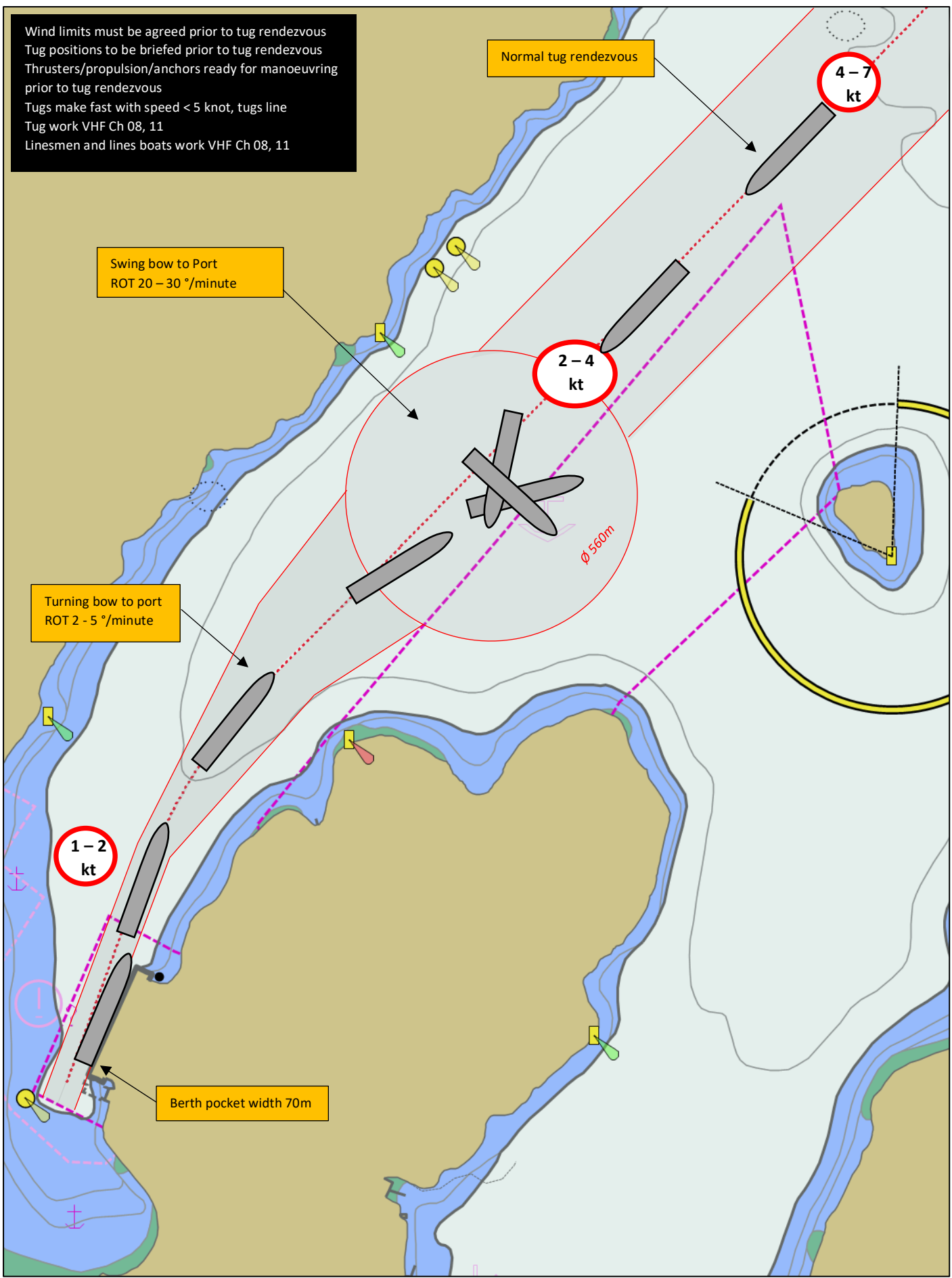
2 - 4
kt

Turning bow to port
 ROT 2 - 5 °/minute

1 - 2
kt

Berth pocket width 70m

Ø 560m

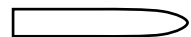


14 Auckland Street, Picton
 PO Box 111, Picton 7250
 Telephone (03) 520 3399
 Fax (03) 573 7695
www.portmarlborough.co.nz

SHAKESPEARE BAY

MANOEUVRING PLAN

Indicative vessel size 180m x 32m



Safety depth 10.0m