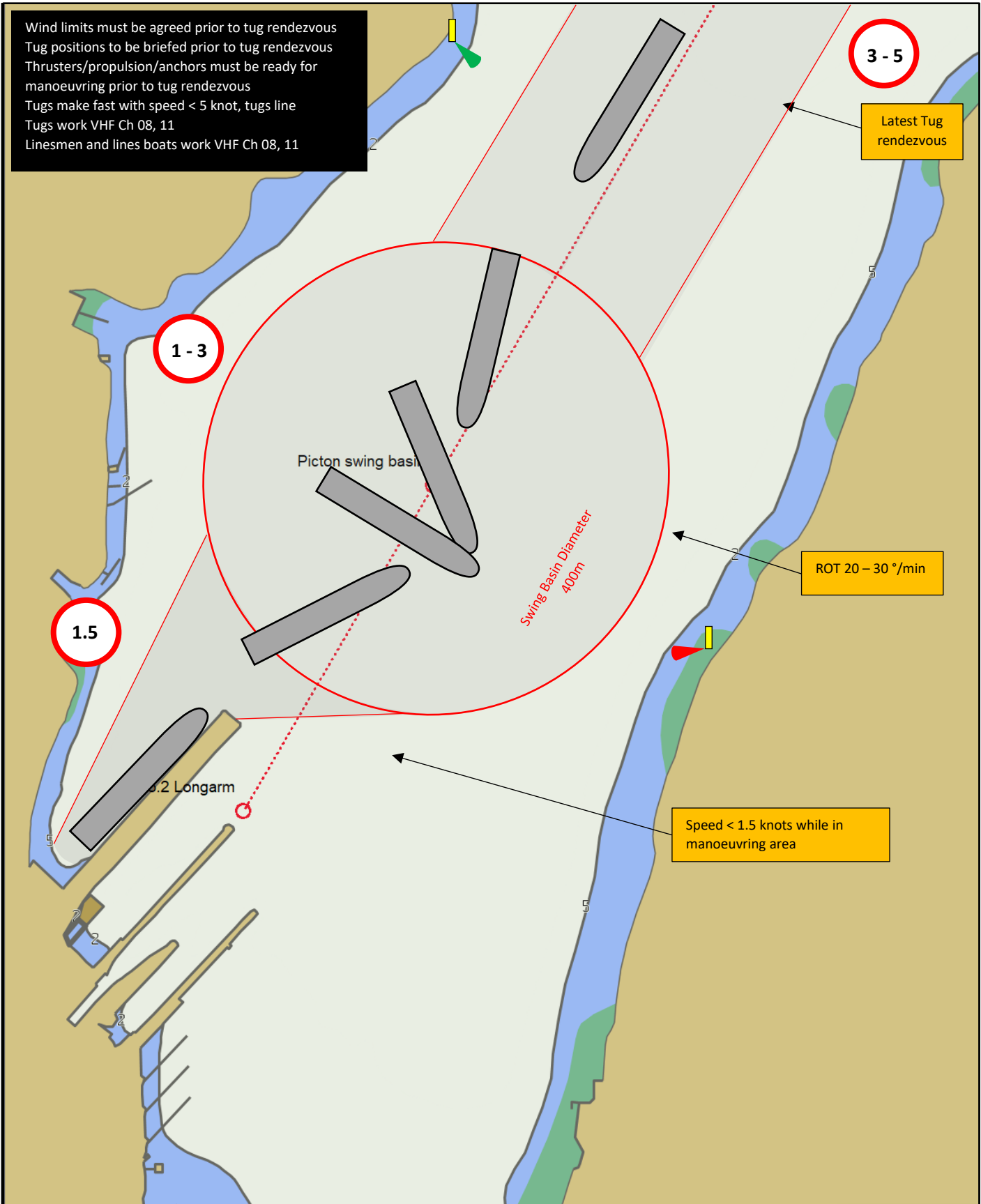


Wind limits must be agreed prior to tug rendezvous
Tug positions to be briefed prior to tug rendezvous
Thrusters/propulsion/anchors must be ready for manoeuvring prior to tug rendezvous
Tugs make fast with speed < 5 knot, tugs line
Tugs work VHF Ch 08, 11
Linesmen and lines boats work VHF Ch 08, 11



14 Auckland Street, Picton
PO Box 111, Picton 7250
Telephone (03) 520 3399
Fax (03) 573 7695
www.portmarlborough.co.nz

PICTON HARBOUR MANOEUVRING PLAN

Indicative vessel 180m x 25m



Displayed safety depth 5.0m