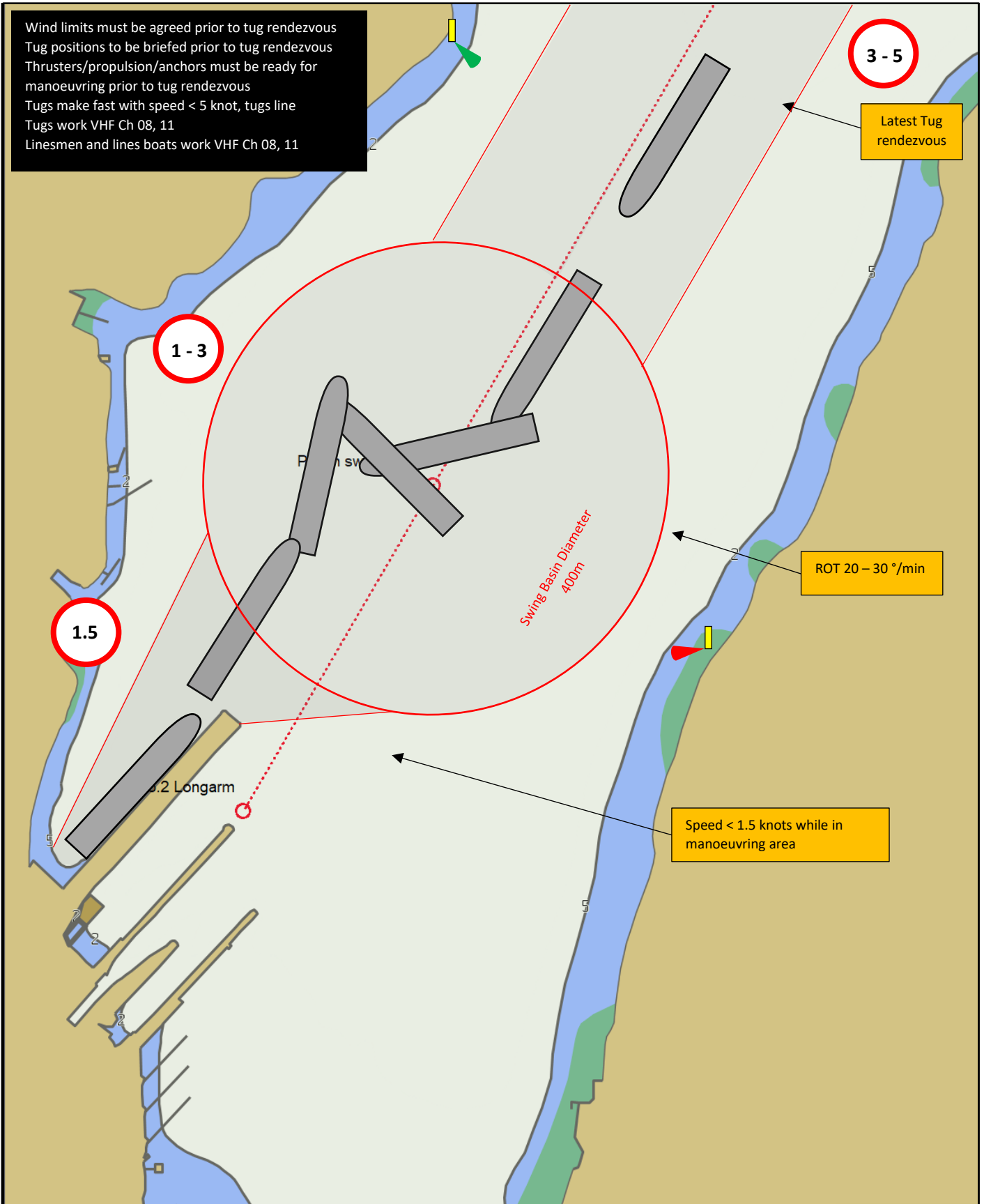


Wind limits must be agreed prior to tug rendezvous
 Tug positions to be briefed prior to tug rendezvous
 Thrusters/propulsion/anchors must be ready for manoeuvring prior to tug rendezvous
 Tugs make fast with speed < 5 knot, tugs line
 Tugs work VHF Ch 08, 11
 Linesmen and lines boats work VHF Ch 08, 11



14 Auckland Street, Picton
 PO Box 111, Picton 7250
 Telephone (03) 520 3399
 Fax (03) 573 7695
www.portmarlborough.co.nz

PICTON HARBOUR MANOEUVRING PLAN

Indicative vessel 180m x 25m



Displayed safety depth 5.0m