

Wind limits must be agreed prior to singling up  
 Tug positions to be briefed prior to singling up  
 Thrusters/propulsion/anchors ready for manoeuvring prior to singling up  
 Tugs let go with speed < 5 knot, tugs line  
 Tug work VHF Ch 08, 11  
 Linesmen and lines boats work VHF Ch 08, 11

Check ferry traffic prior to proceeding outbound

Tugs dismissed

Turning bow to starboard  
 ROT 2 - 5 °/minute

Berth pocket width 70m

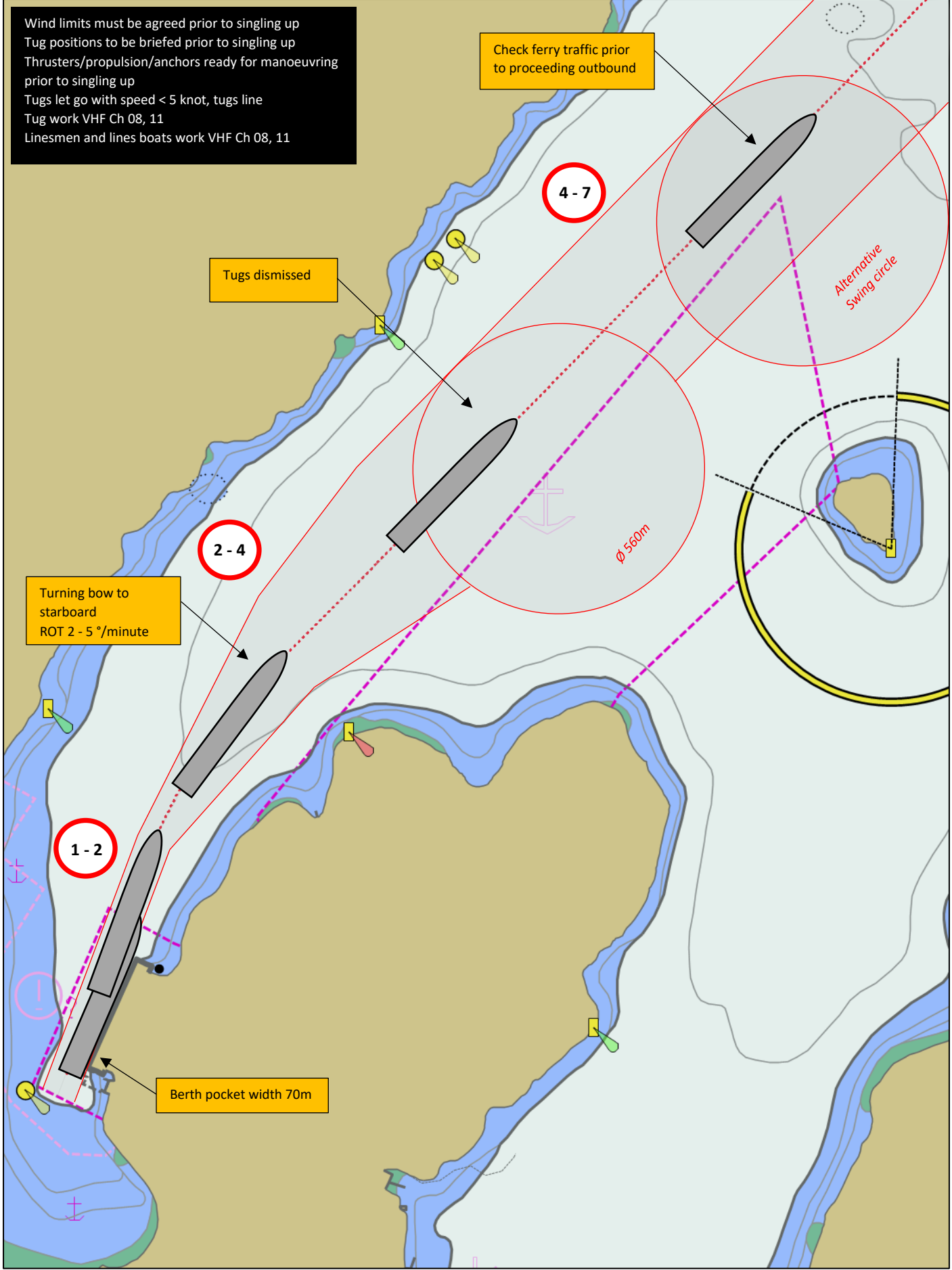
4 - 7

2 - 4

1 - 2

Alternative Swing circle

Ø 560m



14 Auckland Street, Picton  
 PO Box 111, Picton 7250  
 Telephone (03) 520 3399  
 Fax (03) 573 7695  
[www.portmarlborough.co.nz](http://www.portmarlborough.co.nz)

# SHAKESPEARE BAY

## MANOEUVRING PLAN

Indicative vessel size 320m x 40m



Displayed safety depth 10.0m