

Wind limits must be agreed prior to tug rendezvous  
 Tug positions to be briefed prior to tug rendezvous  
 Thrusters/propulsion/anchors ready for manoeuvring prior to tug rendezvous  
 Tugs make fast with speed < 5 knot, tugs line  
 Tug work VHF Ch 08, 11  
 Linesmen and lines boats work VHF Ch 08, 11

Normal tug rendezvous

Swing bow to starboard  
 ROT 20 – 30 °/minute

Turning bow to port  
 ROT 2 - 5 °/minute

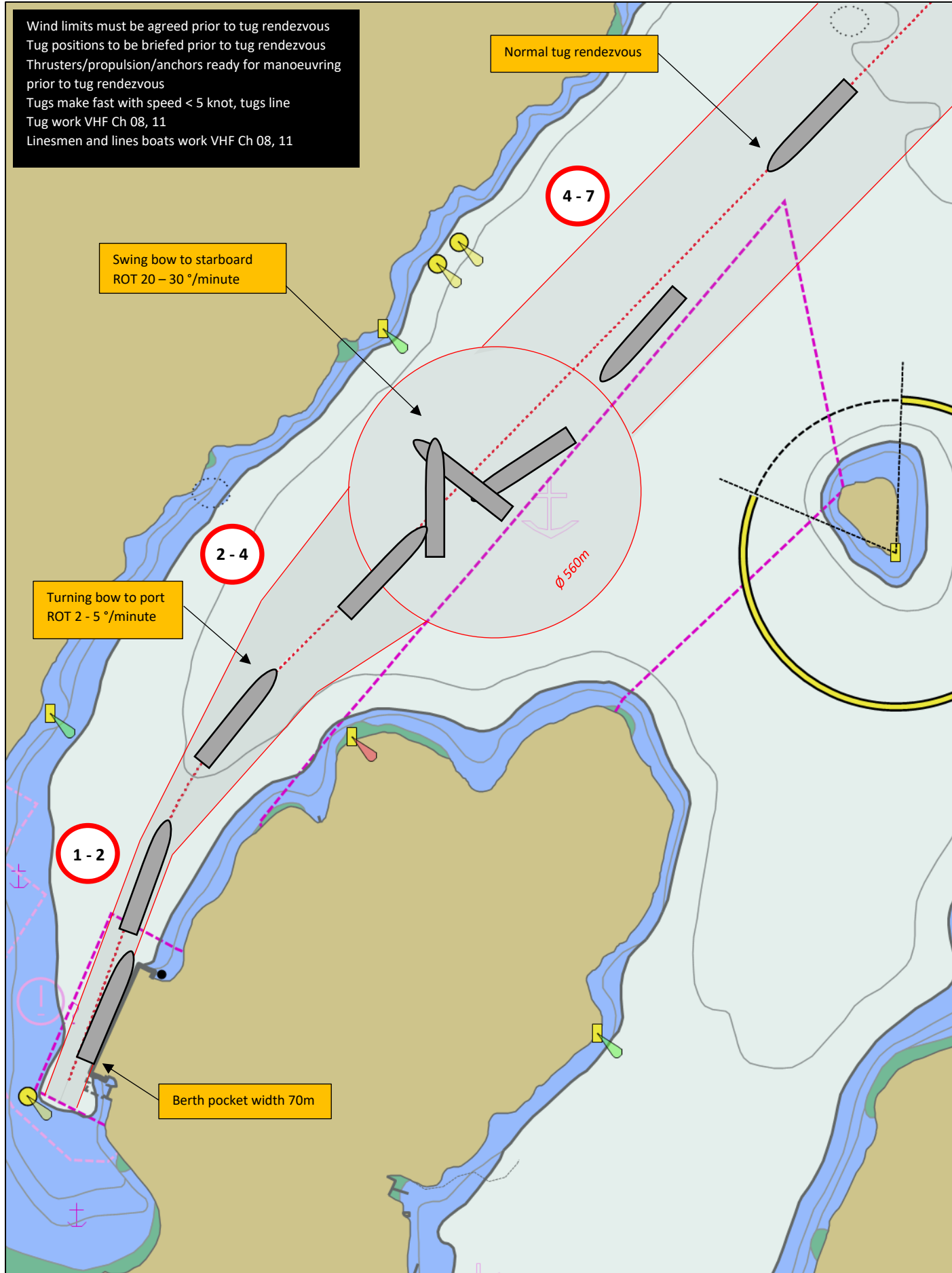
Berth pocket width 70m

4 - 7

2 - 4

1 - 2

Ø 560m



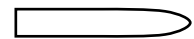
14 Auckland Street, Picton  
 PO Box 111, Picton 7250  
 Telephone (03) 520 3399  
 Fax (03) 573 7695

[www.portmarlborough.co.nz](http://www.portmarlborough.co.nz)

# SHAKESPEARE BAY

## MANOEUVRING PLAN

Indicative vessel size 180m x 32m



Safety depth 10.0m