

Wind limits must be agreed prior to singling up  
 Tug positions to be briefed prior to singling up  
 Thrusters/propulsion/anchors ready for manoeuvring prior to singling up  
 Tugs let go with speed < 5 knot, tugs line  
 Tug work VHF Ch 08, 11  
 Linesmen and lines boats work VHF Ch 08, 11

Check ferry traffic before proceeding out

Swing bow to port  
 ROT 20 – 30 °/minute

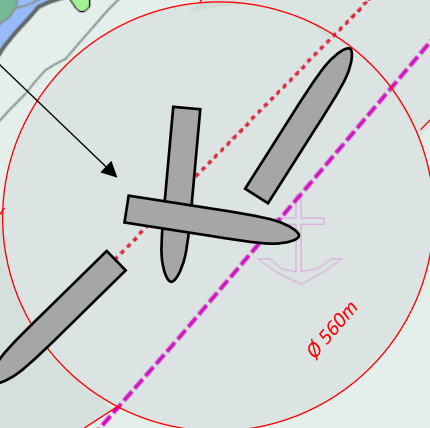
Turning bow to starboard  
 ROT 2 - 5 °/minute

2 - 4

4 - 7

1 - 2

Berth pocket width 70m

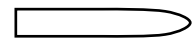


14 Auckland Street, Picton  
 PO Box 111, Picton 7250  
 Telephone (03) 520 3399  
 Fax (03) 573 7695

[www.portmarlborough.co.nz](http://www.portmarlborough.co.nz)

# SHAKESPEARE BAY MANOEUVRING PLAN

Indicative vessel size 180m x 32m



Safety depth 10.0m