

Wind limits must be agreed prior to singling up
 Tug positions to be briefed prior to singling up
 Thrusters/propulsion/anchors ready for manoeuvring
 prior to singling up
 Tugs let go with speed < 5 knot, tugs line
 Tug work VHF Ch 08, 11
 Linesmen and lines boats work VHF Ch 08, 11

Check ferry traffic before
 proceeding out

Swing bow to starboard
 ROT 20 – 30 °/minute

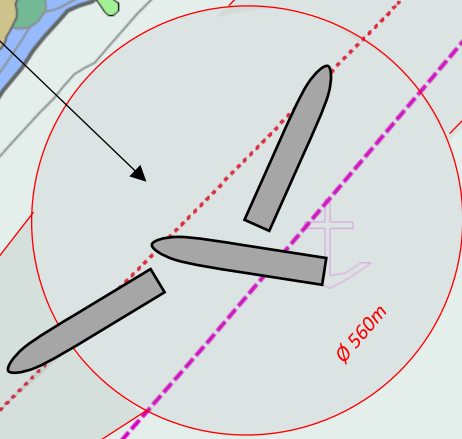
Turning bow to
 starboard
 ROT 2 - 5 °/minute

Berth pocket width 70m

4 - 7

2 - 4

1 - 2

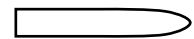


14 Auckland Street, Picton
 PO Box 111, Picton 7250
 Telephone (03) 520 3399
 Fax (03) 573 7695

www.portmarlborough.co.nz

SHAKESPEARE BAY MANOEUVRING PLAN

Indicative vessel size 180m x 32m



Safety depth 10.0m